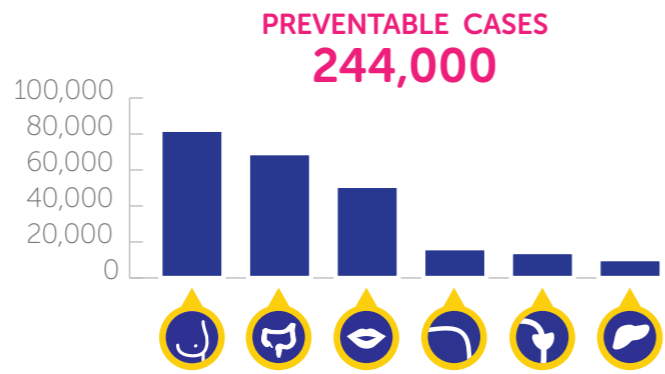
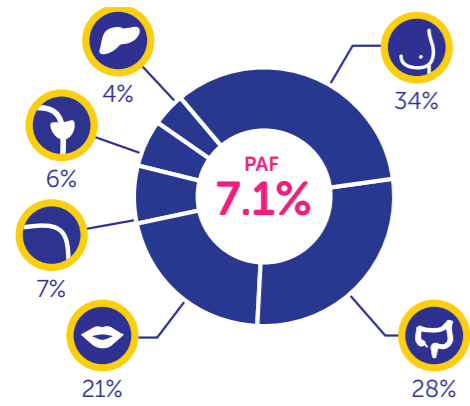


Cancers caused by alcohol in Europe

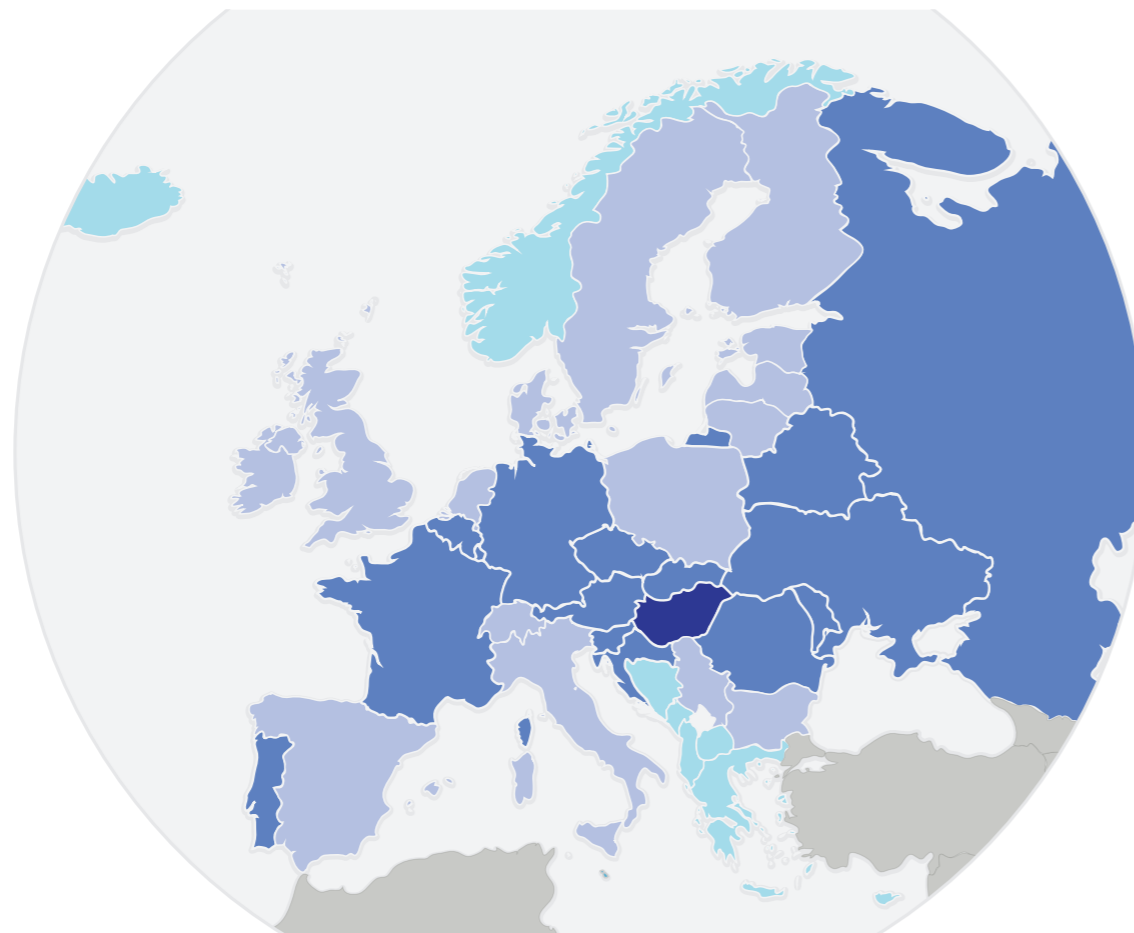
Proportions of all cancers and number of cancers that could be prevented by alcohol control

Europe summary



The 7.1% of all cancer cases in Europe attributable to alcohol consist predominantly of cancers of the breast; colorectum and lip, oral cavity, oropharynx and hypopharynx, but also cancers of the oesophagus, larynx and liver.

Preventable alcohol related cancer cases



Sources of information: GLOBOCAN 2012 (Ferlay, 2013) [1]; Adult per capita consumption of ethanol for 2002 from Global Information System on Alcohol and Health (GISAH) [<http://www.who.int/gho/alcohol/en/>]; Risk estimates: Bagnardi et al, 2015 [20]; Methodology: Shield et al, 2018 [21].

Country summaries

The charts below show, for each country in Europe, the overall percentage of all specified cancer sites attributable to alcohol consumption (the population attributable fraction or PAF). The PAF uses information on the risk of alcohol, prevalence of alcohol consumption and incidence of cancer in each country to calculate the proportion of cancers that could be prevented by alcohol control. Adjacent to each country name is the estimated number of new cases this represents for 2012.

